

# Conference: Keep Talking Pierce County.



Keep Talking  
Pierce County.



Science and skills for conversations about marijuana use with youth, families and pregnant women.

Offering a whole family approach, this conference will provide attendees with baseline knowledge around marijuana laws, use, safe storage and tools for talking with families about use.

## Topics

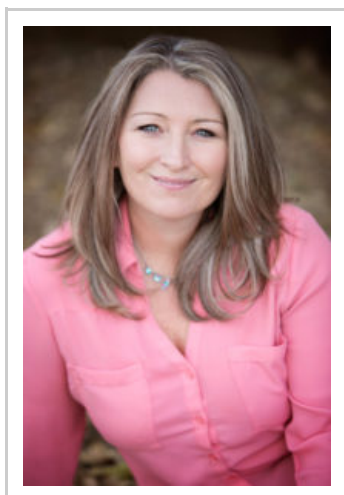
- Marijuana 101- WA State laws, regulations and marijuana in all its forms.
- Latest research and understanding about marijuana use during pregnancy and breastfeeding.
- Efforts and resources in Pierce County and WA State for education and preventing youth consumption of marijuana.
- Trends in use and abuse of marijuana.
- Marijuana safe storage education and resources for families.
- Tips for helpful conversations with patients and families about marijuana use.

## Audience

Medical/service providers to young families, pregnant or breastfeeding women who are asked for or offer

advice about marijuana use.

## Featured Presenter



Laurel Wilson has twenty-five years of experience working with women in the childbearing years and perinatal professionals. As the recreational and medicinal use of marijuana increases around the world, the potential for babies to be impacted by this substance during breastfeeding increases exponentially. Laurel will guide us through the most recent research and policies surrounding marijuana use and exposure during pregnancy and breastfeeding.

## Presenters & Facilitators

- Tutrecia Baker — Youth Prevention Initiatives Program Manager — Tacoma Pierce-County Health Department
- Trecia O'Neill Ehrlich, MPH — Research Consultant — Washington State Liquor and Cannabis Board
- Nichole Ayres, MSW
- ...and more!

## Sponsored in partnership with

Perinatal Collaborative of Pierce County and Tacoma-Pierce County Health Department Youth Prevention Initiatives.

## This free event is brought to you by

Washington State Department of Health, Dedicated Marijuana Account Funding.

### Date/Time

06/19/2018

9:00 am - 4:00 pm

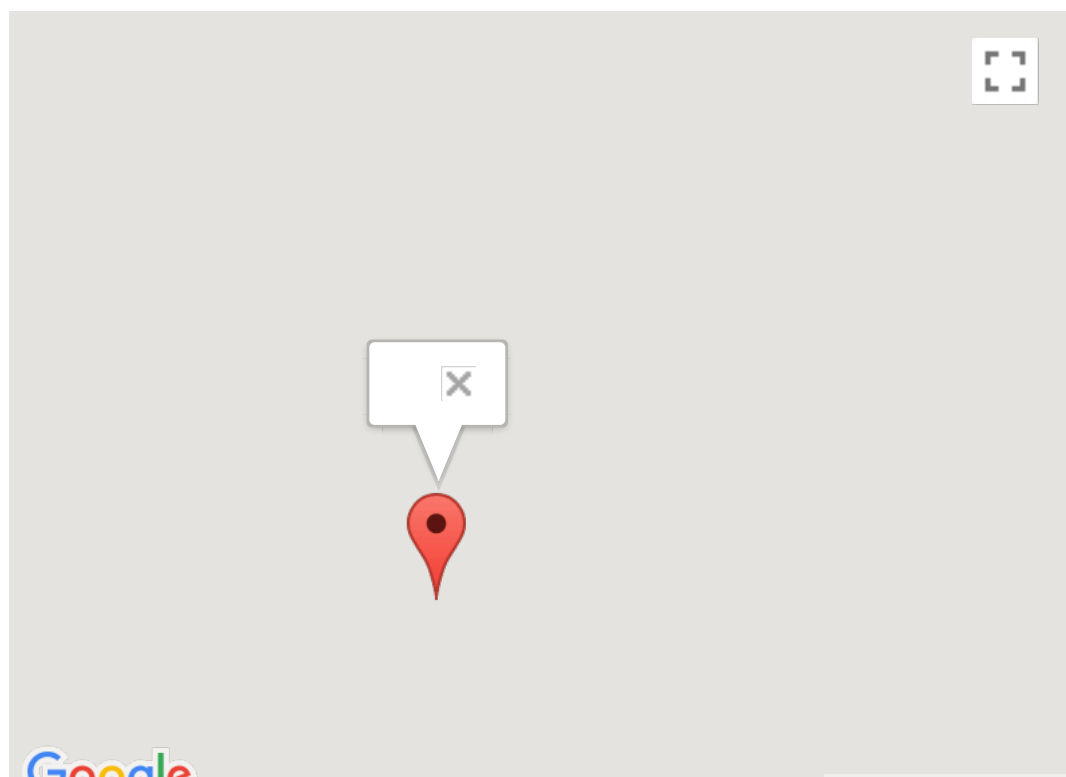
Registration &

Continental Breakfast:

8:30 am - 9:00 am

### Location

[Environmental Services Building](#)



# Registration

Spaces

1

Name \*

Email \*

Agency \*

Phone

Lunch \*

Select ...

What question would you like to have answered about marijuana use in youth, families, and mothers?

Send your reservation